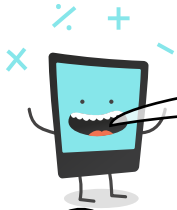




Name: \_\_\_\_\_ Date: \_\_\_\_\_

I can use a column method to add a range of numbers.

LessonID: 005



Use the column method to complete these calculations.  
Remember to line up your digits carefully.

(eg)  $976 + 16$

	9	7	6
+		1	6
<hr/>			
	9	9	2
<hr/>			

(eg)  $16.4 + 0.38$

	1	6	.	4	0	
+			0	.	3	8
<hr/>						
	1	6	.	7	8	
<hr/>						

1  $329.4 + 675$

6  $814 + 899.6$

2  $6.9 + 630.49$

7  $301 + 745$

3  $829.03 + 784.17$

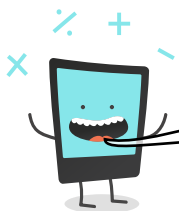
8  $567.88 + 68.8$

4  $449.6 + 715$

9  $747.51 + 100.07$

5  $183 + 222.39$

10  $235.51 + 724.8$



Challenge: Two of these numbers add together to 30.  
Can you work out which two?

16.4

7.5

19.46

12

16.03

23.5

13.97

2.8

17.2