



Name: _____

Date: _____

I can control motors on the Crumble.

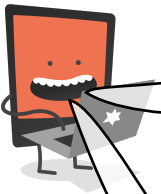
LessonID: 467



Motors need to be connected to one of the two pairs of motor terminals on the crumble.

What's the minimum speed value you can enter that will actually make the motor turn?

What's the maximum speed value you can enter?

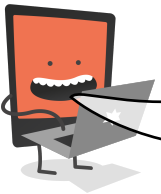


Program your motor to turn forwards at half speed for 5 seconds, turn backwards at full speed for 3 seconds and then to turn off. Show the programming blocks you used below.

program start

```
motor [ ] at [ ] %  
wait [ ] seconds  
motor [ ] at [ ] %  
wait [ ] seconds  
motor [ ]
```

Can you adapt your code so you program two motors? Can you make one do the opposite to the other?



Imagine a vehicle with turning wheels. What do you think would happen to the vehicle if the wheels on the left were turning more slowly than the wheels on the right?
What if the wheels on the left stopped completely?

