

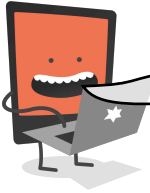


Name: \_\_\_\_\_

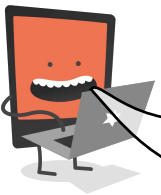
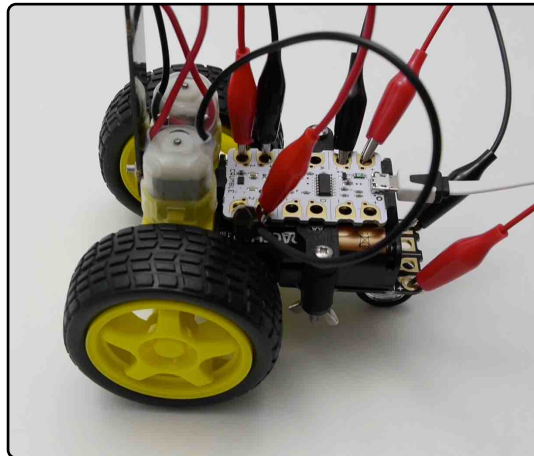
Date: \_\_\_\_\_

I can use lights and motors in a robot car.

LessonID: 468

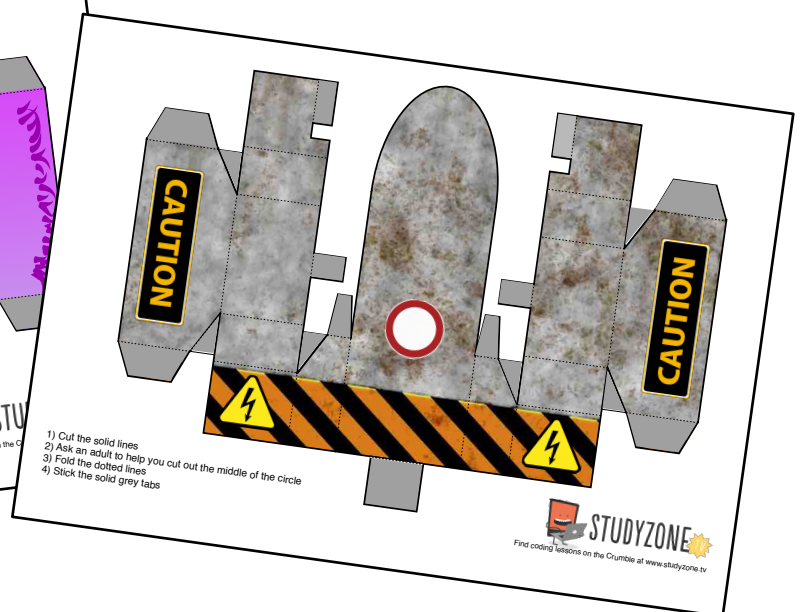
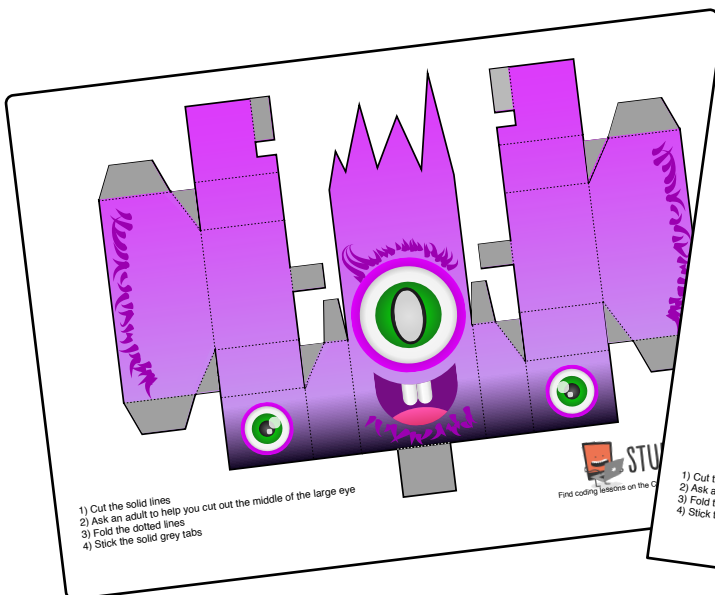


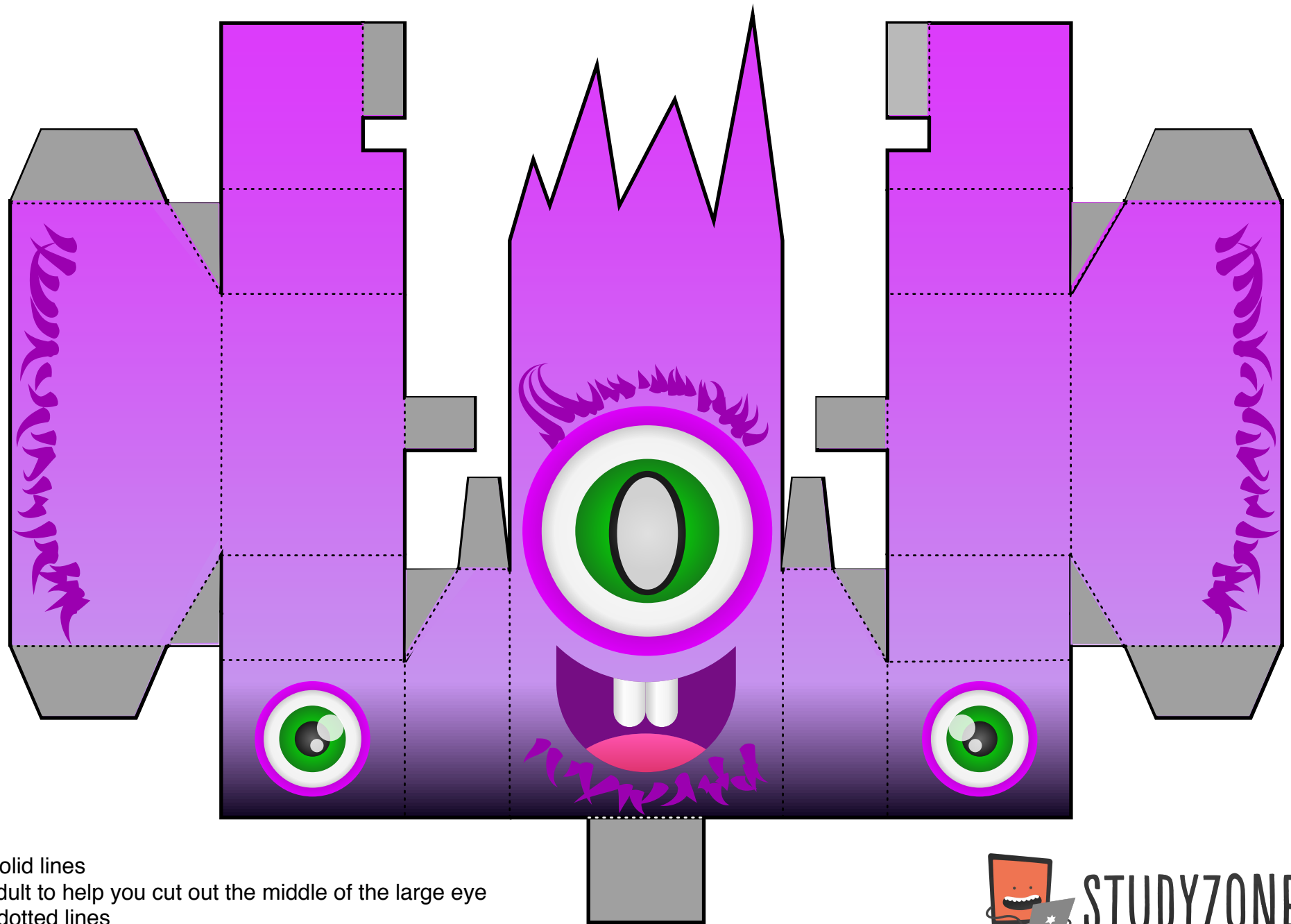
Work through the step-by-step guide that came with your Crumble car kit. If you don't have the Crumble car kit, you could always try using an egg box, or a wooden frame as the chassis for your car.



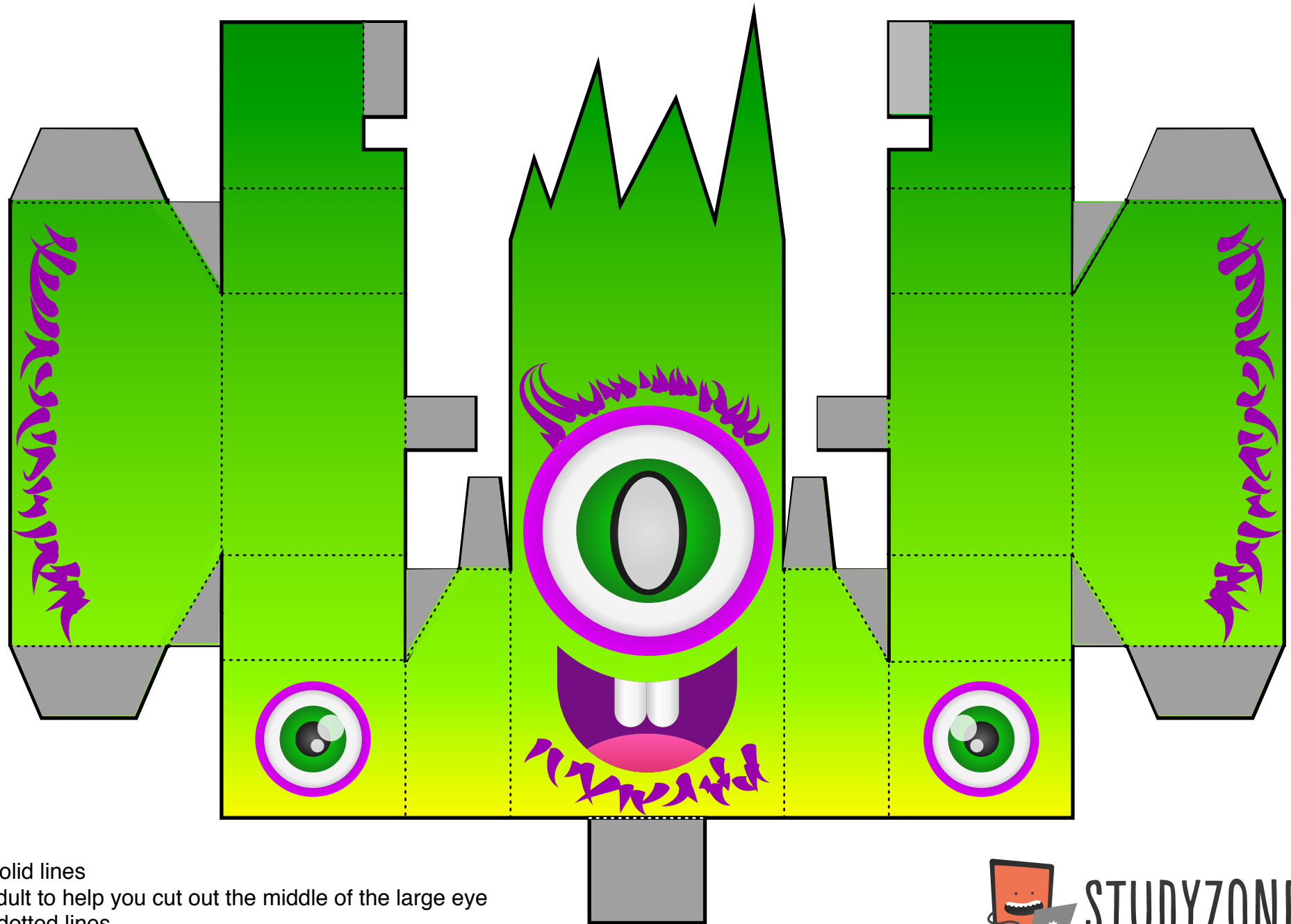
Once your car is built, why not add a body kit to turn it into a monster or some sort of patrol vehicle.

Use the net templates on the following pages for ideas. When you print these, make sure you print them at 100% actual size.

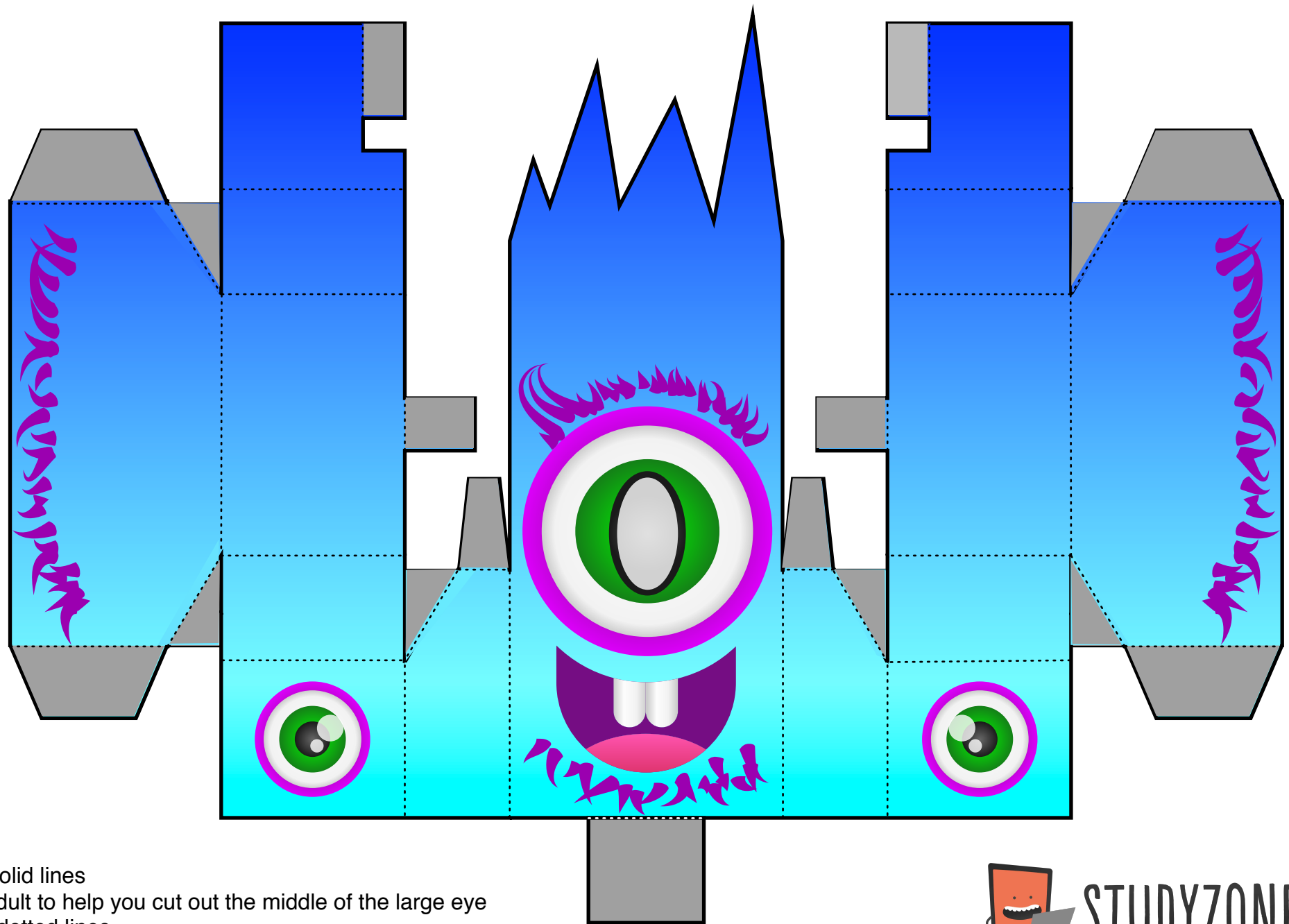




- 1) Cut the solid lines
- 2) Ask an adult to help you cut out the middle of the large eye
- 3) Fold the dotted lines
- 4) Stick the solid grey tabs

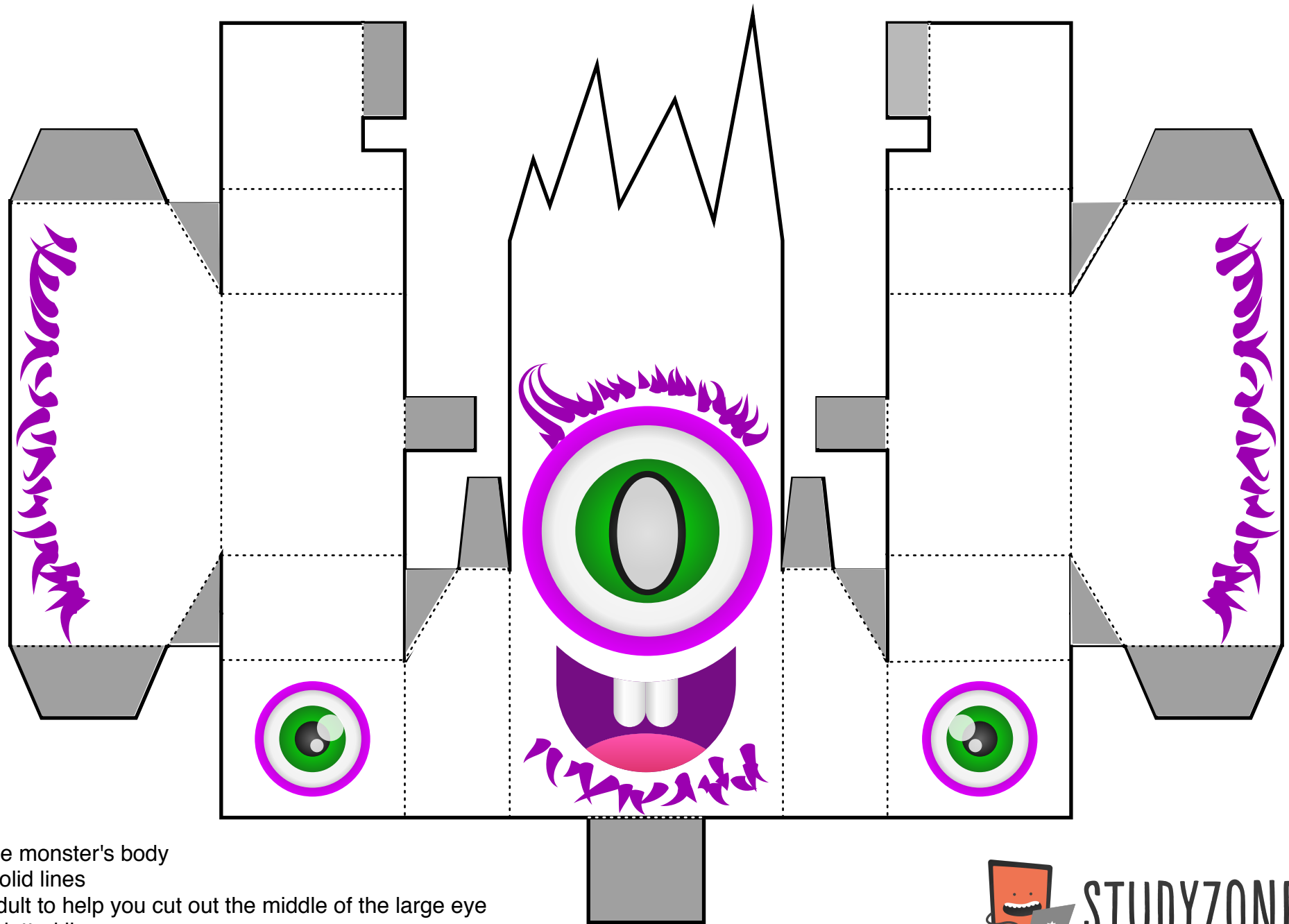


- 1) Cut the solid lines
- 2) Ask an adult to help you cut out the middle of the large eye
- 3) Fold the dotted lines
- 4) Stick the solid grey tabs

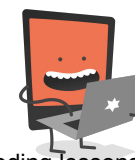


- 1) Cut the solid lines
- 2) Ask an adult to help you cut out the middle of the large eye
- 3) Fold the dotted lines
- 4) Stick the solid grey tabs



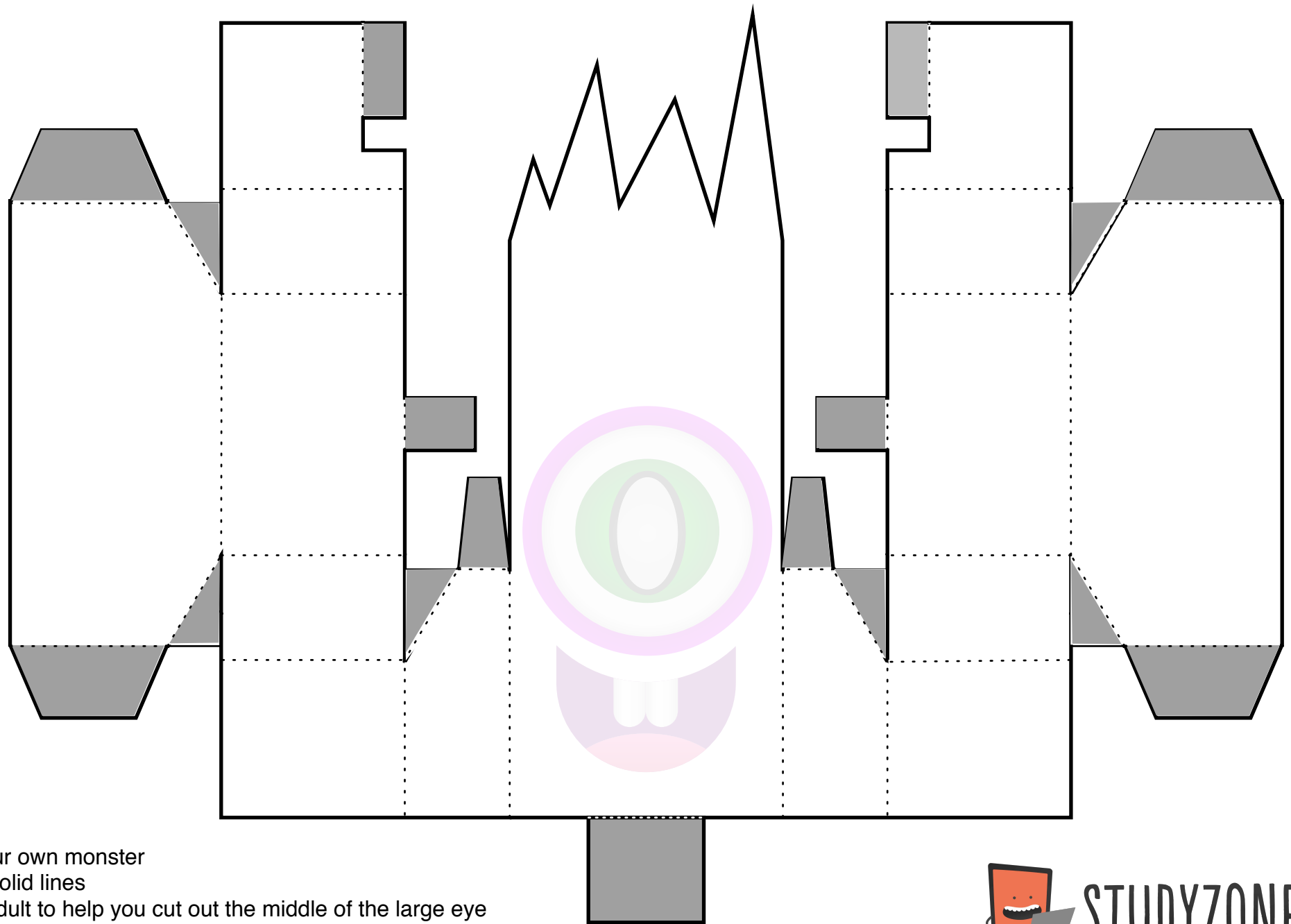


- 1) Colour the monster's body
- 2) Cut the solid lines
- 3) Ask an adult to help you cut out the middle of the large eye
- 4) Fold the dotted lines
- 5) Stick the solid grey tabs

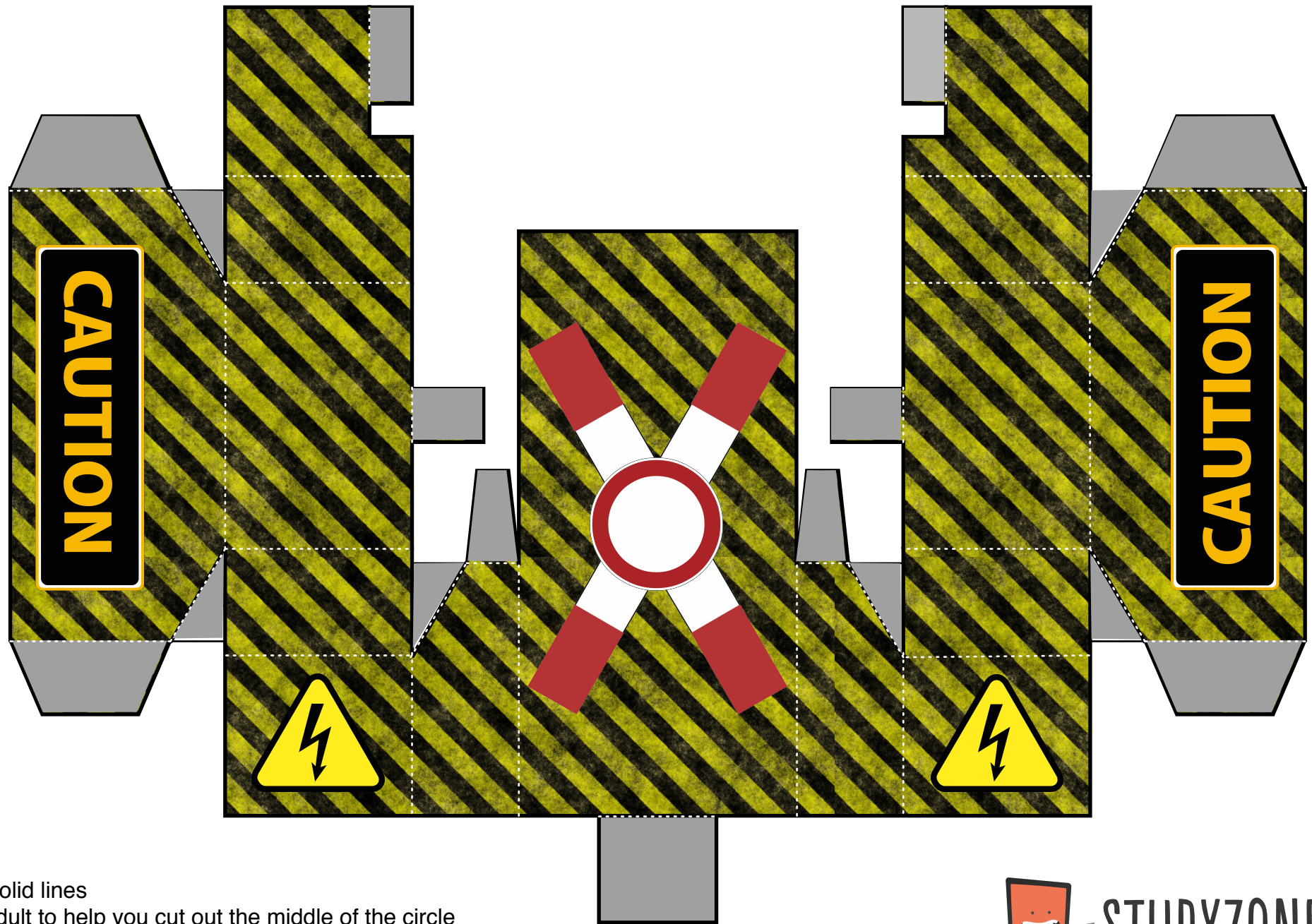


**STUDYZONE** TV

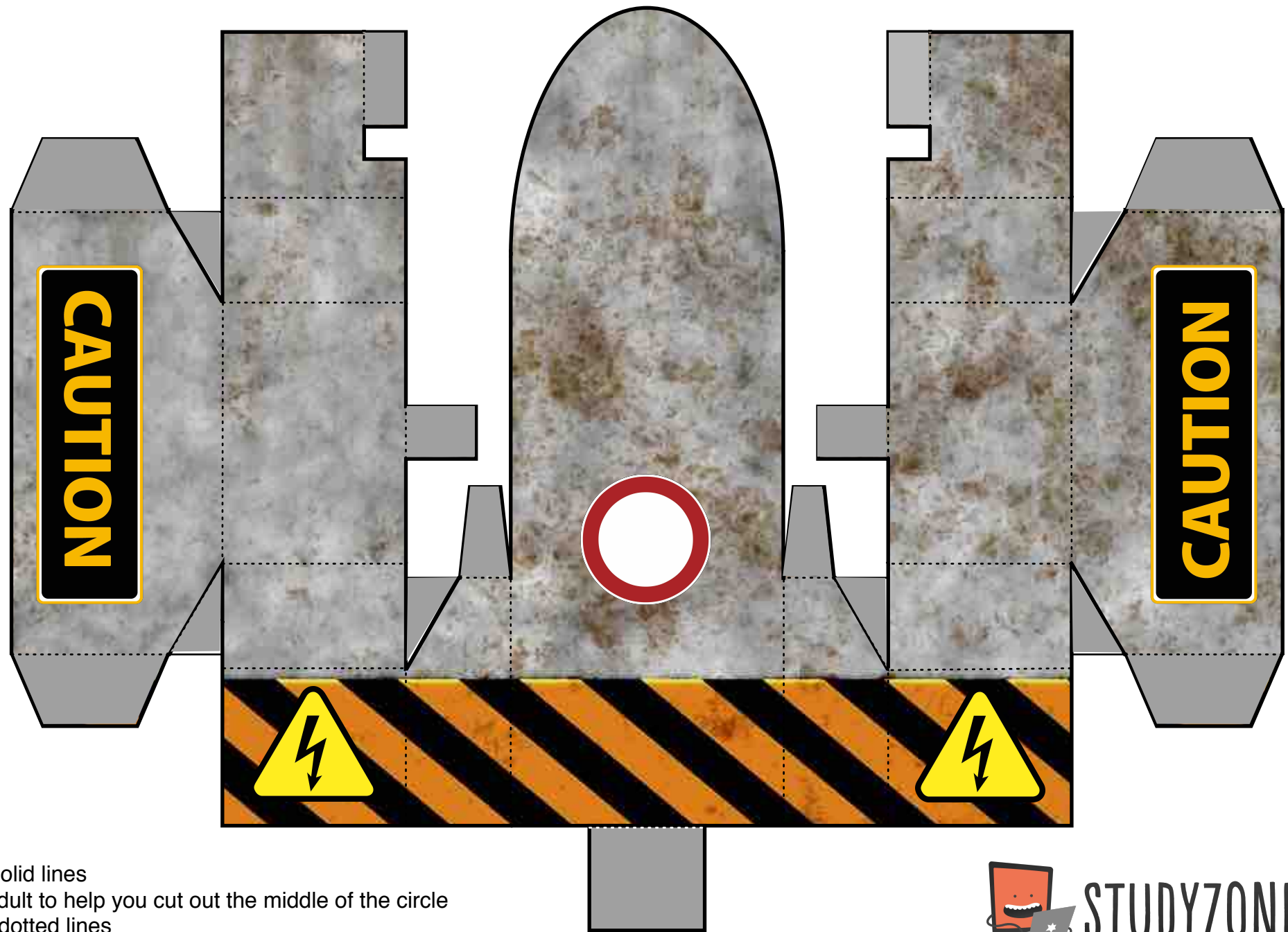
Find coding lessons on the Crumble at [www.studyzone.tv](http://www.studyzone.tv)



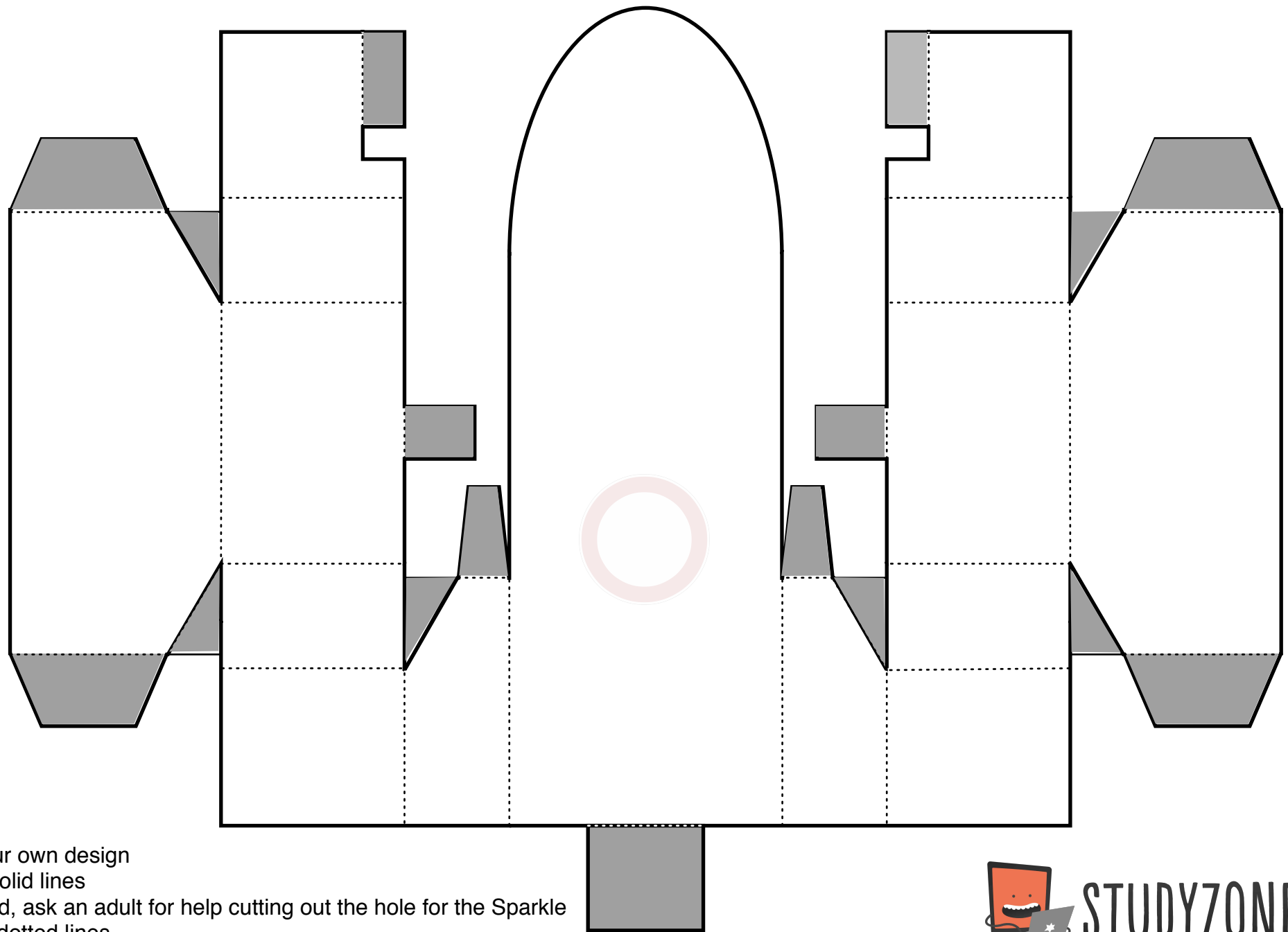
- 1) Draw your own monster
- 2) Cut the solid lines
- 3) Ask an adult to help you cut out the middle of the large eye
- 4) Fold the dotted lines
- 5) Stick the solid grey tabs



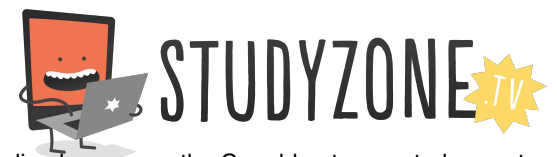
- 1) Cut the solid lines
- 2) Ask an adult to help you cut out the middle of the circle
- 3) Fold the dotted lines
- 4) Stick the solid grey tabs



- 1) Cut the solid lines
- 2) Ask an adult to help you cut out the middle of the circle
- 3) Fold the dotted lines
- 4) Stick the solid grey tabs



- 1) Draw your own design
- 2) Cut the solid lines
- 3) If required, ask an adult for help cutting out the hole for the Sparkle
- 4) Fold the dotted lines
- 5) Stick the solid grey tabs



Find coding lessons on the Crumble at [www.studyzone.tv](http://www.studyzone.tv)