



Scan the code or use the lesson ID to access this lesson online.

Name: \_\_\_\_\_ Date: \_\_\_\_\_

learningObjective

LessonID:  
thisLessonID



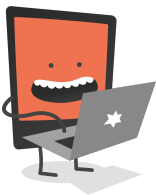
Your task is to design and build an eco-friendly house of the future. Your house must use different switches and sensors to automate various features of the house. Here are some ideas.

Automatically turn on a porch light when the front door is opened.

Use a pressure switch in a bed to automatically turn off the bedroom lights when someone is in bed.

Use a slider to dim the lights so they're not using too much electricity.

If you have access to a light dependent resistor, automatically turn off all lights when it's a bright day.



Switches can be made out of all sorts of things. For a simple 'On Off' switch, all you need to do is complete the circuit and send voltage to one of the sensors on the Crumble. How could you design a switch that flashed a light when a bath was full of water?

Handwriting practice area with four horizontal dotted lines.