



Name: _____

Date: _____




I can use the different values sensors provide.

LessonID: 476



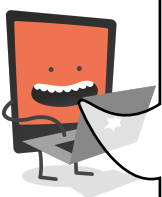
If we know the minimum, maximum and normal working values for a sensor, we can use these as thresholds across which our program will function differently. Look at the code below then work out possible sensor values for each colour.

```

program start
do forever
  if analogue A > 200 then
    set all sparkles to 
  end if
  if analogue A < 150 then
    set all sparkles to 
  end if
  if analogue A > 150 and analogue A < 200 then
    set all sparkles to 
  end if
end loop

```

Sensor value	Sparkle colour
	Red
	Green
	Blue
	Sparkle won't light
	Sparkle won't light



There are two values that will cause the Sparkle not to light up. Can you work out what they are?
How would you fix this bug?

To fix this bug I would

.....

.....

.....