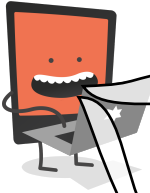




Name: _____ Date: _____

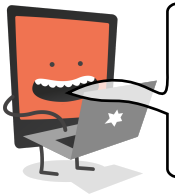
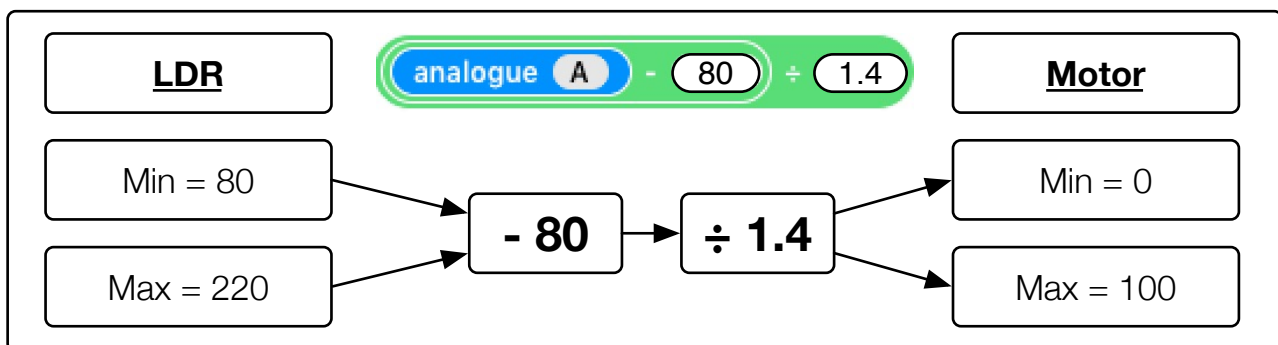
I can adapt input values so they operate within a useful range.

LessonID: 477



Sometimes the range of values received from a sensor don't operate with the range of values that we need for our program. To solve this, we can change the values using a calculation.

Take a look at the example below which shows how a light dependent resistor (LDR) can be used to control a motor, from 0% power up to 100% power. Can you see how this is done?



Now can you work out what numerical operators are required for each of the examples below? In both cases, different Sparkles on a Sparkle Baton should light up. These Sparkles have an index from 0 to 7.

