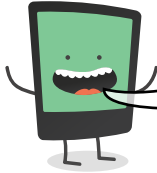




Name: _____ Date: _____

I can identify possessive pronouns within sentences.

LessonID: 231



Possessive pronouns show ownership. They show one thing being owned by another. In each sentence below, circle the possessive pronoun. The first has been done for you.

Those pens are
mine.

"Is it his?" asked
the boy.

The ball is yours.

The winning
medal is yours
but last year it
was mine.

It turned out it was hers all along.

"It's theirs!"
shouted the boy.



It's easy to confuse **possessive pronouns** with **possessive determiners**. Look at the example below.

his is a possessive
determiner. It doesn't
replace the noun
(pens). It comes before
the noun.

Those are
his pens.

Those pens
are **his**.

his is a possessive
pronoun. It replaces
the noun (pens).



In each sentence below, **circle** any possessive pronouns and **underline** any possessive determiners.

These are your pens
but those are mine.

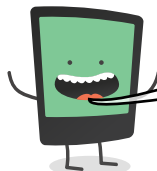
This is his pen but that
is my pen.

This toy is mine but that
toy is hers.

This pen is hers buy it
used to be yours.

His bike is broken but
mine is working well.

"This money is ours!"
demanded Ben.



Write your own **new** sentence that correctly uses '**his**' as a possessive pronoun then as a possessive determiner.

'**his**' as a possessive
pronoun

'**his**' as a possessive
determiner