



Name: _____

Date: _____

I can identify which relative pronoun to use.

LessonID: 234

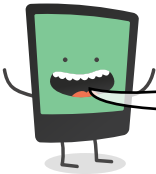


It's important when using relative pronouns to select the correct word. This will depend upon whether the noun we're describing is living or not and whether we're using the relative pronoun to clarify the noun or to add extra detail. Take a look.

Living	who	whose
	which	that

Ben, who was not happy, stomped across the room.
Ben, whose friends cheered him on, score the goal.

The car, which was running out of fuel, slowed down.
The car that was damaged was taken to the garage.



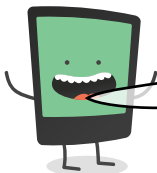
Select the correct relative pronoun for each sentence below. Here's a hint for non-living things: Use '**which**' when adding extra detail and use '**that**' when clarifying the noun.

The field is at the end of our garden is for sale.

Paul, loves playing guitar, entered Battle of the Bands.

The field, is a sanctuary for wildlife, is inhabited by frogs and toads.

Sally, pet hamster had gone missing, was searching her room.



A common mistake is to use the word 'what' as a relative pronoun. **This is wrong** and should be avoided. Correct these errors below, selecting the best pronoun from the list at the top.

The work what we had been given was quite easy.

The team, what is made up of players of all ages, won the match.

Ben, what always struggled to get out of bed, was late for school.

The work we had been given was quite easy.

The team, is made up of players of all ages, won the match.

Ben, always struggled to get out of bed, was late for school.