



Name: _____

Date: _____

I can use adverbs that show degrees of possibility.

LessonID: 239



We usually think of adverbs as modifying verbs, but that's not all they do. Adverbs of degree can actually modify verbs, adjectives or even other adverbs. They show us how strongly something applies. Take a look at the examples below.

Modifying an adjective

They waited in an **extremely** long queue.

The adverb 'extremely' tells us just how long the queue was. It modifies the adjective 'long'.

Modifying a verb

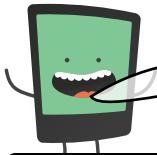
He **almost** fell asleep

The adverb 'almost' tells us more about the verb phrase 'fell asleep'.

Modifying an adverb

The tide came in **really** quickly.

The adverb 'really' tells us just how quickly the tide came in. It modifies the adverb 'quickly'.



Fill in the gaps for each example below, identifying the missing words and their word class. Some parts have been done for you.

The garden was slightly small for the family.

adverb

modifies

adjective

small

Annoyingly, the car was barely moving due to the traffic.

adverb

modifies

verb

The box was extremely heavy.

adverb

modifies

heavy

The teacher was almost always right.

adverb

modifies

adverb

The child performed more wonderfully than ever before.

adverb

modifies

wonderfully

Ben did his work extremely well.

adverb

modifies