

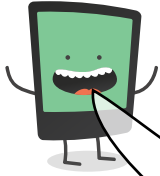


Name: \_\_\_\_\_

Date: \_\_\_\_\_

I can identify articles and demonstrative determiners.

LessonID: 248



Determiners are words that **introduce nouns**. They come before the noun and any words linked to the noun, such as adjectives.

**Articles** are one type of determiner. They're the words

**the a an**

Use '**the**' to introduce a specific noun phrase.

Use '**a**' if the noun phrase begins with a vowel: a, e, i, o, u, otherwise us '**an**'.

Match each sentence to the most appropriate article.

\_\_\_\_ evening would soon be over.

**the**

\_\_\_\_ bell is rung to show when break time ends.

"I'd love \_\_\_\_ orange please."

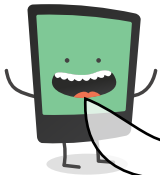
**a**

Even though \_\_\_\_ bell had been rung, Ben continued to work.

At the park we found \_\_\_\_ football.

**an**

Make \_\_\_\_ estimate of how tall you think you are.



Demonstratives are another type of determiner. They're the words

**this that these those**

They must introduce the noun rather than replace the noun. If they replace the noun, they're pronouns. For each example below, decide whether the underlined word is a determiner or a pronoun.

Put **these** in the bin.

**Those** are mine.

**That** box is messy.

- Determiner
- Pronoun

- Determiner
- Pronoun

- Determiner
- Pronoun

Write a sentences that uses 'this' as a determiner.

.....  
.....

Write a sentences that uses 'this' as a pronoun.

.....  
.....