



Name: _____

Date: _____

I can identify questions.

LessonID: 252



Questions demand answers - they try and find things out. Questions always end with question marks which take the place of the full stop. Fill in the table below with a suitable question or answer. Make sure you punctuate your answers correctly.

Question

Answer

Where do you live?

.....

.....

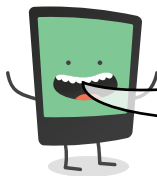
The match is on Sunday at 3pm.

.....

It's not much further.

What time will the shop shut today?

.....



Some sentences can **appear** to be questions, but are in fact statements. For each sentence below, decide whether it is a question - and should end with a question mark - or whether it is in fact a statement and should end with a full stop.

You have started your work, haven't you

Let me know if I have asked the wrong question

Question Statement

Question Statement

How many miles is Earth from the sun

Sally wondered how many friends would come to her party

Question Statement

Question Statement

Paul asked the teacher for a pen

The children will go out to play, won't they

Question Statement

Question Statement