



Name: \_\_\_\_\_

Date: \_\_\_\_\_

I can identify exclamations.

LessonID: 253



Exclamations are used to show strong emotion, shock or pain. They're often expressed through speech and are marked with an exclamation mark and the end of the sentence.

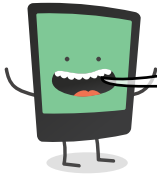
Often exclamations come after the word 'How...' or 'What...'

How exciting!

How well you've all done!

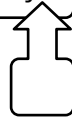
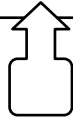
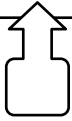
What a fantastic idea!

What dreadful weather!

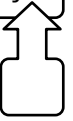
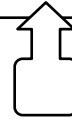
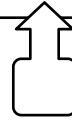


Each of the sentences below is missing an exclamation mark. Put a tick in the correct box to show where it should go.

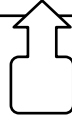
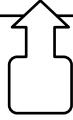
"We won" shouted the children excitedly



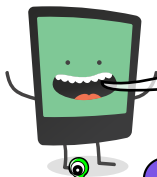
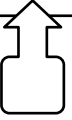
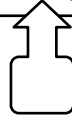
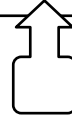
"Ouch" screamed Ben in agony



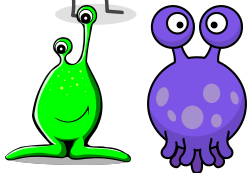
Ben was so surprised "I can't believe it"



"Get down now" yelled Mum



Write your own correctly punctuated exclamation sentences. The images can be used to give you an idea of what to write about.



.....



.....



.....