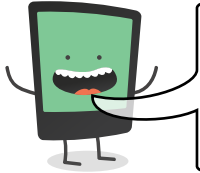




Name: _____ Date: _____

I can identify different meanings caused by comma placement.

LessonID: 295



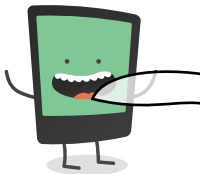
The inclusion and position of commas can subtly change the meaning of a sentence. To help identify the true meaning, it's often helpful to identify the subject in the sentence. Look at the example below.

Puppies who are well behaved get treats.

Puppies, who are well behaved, get treats.

The subject here is 'puppies who are well behaved'. This means that only well behaved puppies will get a treat.

The subject here is 'puppies'. This means that all puppies will get a treat. The extra text, 'who are well behaved' is an embedded clause which is telling you more about puppies in general.



In each sentence below, **underline the subject** then explain fully how the use of commas changes the meaning in the two sentences. Use '**whereas**' or '**however**' to link between your explanations.

Tigers, which are kept in zoos, live entirely off meat.
Tigers which are kept in zoos live entirely off meat.

Children who work hard to learn their spellings do well in tests.
Children, who work hard to learn their spellings, do well in tests.

Apples which are grown in the South East of England taste delicious.
Apples, which are grown in the South East of England, taste delicious.