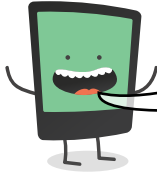




Name: _____ Date: _____

I can use inverted commas to punctuate speech.

LessonID: 296



Inverted commas, also known as speech marks, show us the actual words that are spoken by someone. There are a number of punctuation rules to follow.

"The zoo will open in 1 hour," declared the receptionist.

Opening speech marks start the quote.

There must be punctuation before the closing inverted comma.

Closing speech marks end the quote.

A reporting clause tells us who said the quote.

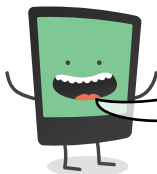


Tick two boxes to show where the missing inverted commas should go.

Fantastic goal, the coach declared.

London is the capital, explained Paul.

Ben said I wasn't allowed to play, complained Sally.



Reporting clauses can go in the middle of spoken text. Look at the example below. Notice the extra rule: a comma goes between the reporting clause and the speech.

"The zoo," Ben explained, "would be closed tomorrow."

Add all the missing punctuation to these sentences.

Tomorrow it will be 25 degrees
said the newsreader

Your play explained the teacher
was the best I have ever seen