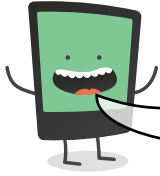




Name: _____ Date: _____

I can use apostrophes for possession with words that end in -s.

LessonID: 299



With apostrophes for possession, whatever comes **before** the apostrophe is the owner of the item. This can be tricky when the owner already ends in the letter -s.
Add the missing apostrophes in each of the following sentences.

It is Charles ball.
(The ball belongs to Charles)

Cyprus weather is lovely.
(The weather belongs to Cyprus)

It was Chris turn.
(The turn belongs to Chris)

The bus wheels were flat.
(The wheels belong to the bus)

The glass crack worsened.
(The crack belongs to the glass)

The gas temperature fell.
(The temperature belongs to the gas)



There's no set rule about whether to add an extra -s after the apostrophe; you will need to decide on a rule and stick to it. Write your own simple sentences below to show the possession of each object. Be sure to punctuate your sentences correctly.

The bag belongs to Mr Jones.

.....

The pens belong to the class.

.....

The colour belongs to the grass.

.....

The horns belong to the hippopotamus.

.....

The dress belongs to Tess.

.....