

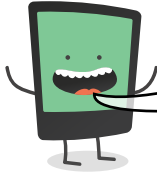


Name: _____

Date: _____

I can identify why an apostrophe has been used.

LessonID: 301



When using apostrophes for possession, it's really important we place the apostrophe carefully as it can change the meaning of the sentence. Look at the examples below.

The **winner's** trophy was presented by the mayor.

The **winners'** trophy was presented by the mayor.

In the first sentence, there is only one winner and the trophy is all theirs, whereas in the second sentence there are many winners who share the trophy.



For each pair of sentences below, **explain fully** how the position of the apostrophe changes the meaning of the sentence.

The gymnasts' points totalled 100.

The gymnast's points totalled 100.

.....
.....

The garden's walls fell down in the storm.

The gardens' walls fell down in the storm.

.....
.....

The citizen's homes were all burgled.

The citizens' homes were all burgled.

.....
.....