



Name: _____

Date: _____

I can use apostrophes to show omission (or contraction).

LessonID: 302



Apostrophes can be used to show that letters are missing within a word. This can be called omission (meaning something is left out) or contraction (meaning to make smaller). For each pair of words below, add the missing apostrophe. Hint: the apostrophe replaces the missing letters.

can not

could not

do not

would not

you are

we will

↓
cant

↓
couldnt

↓
dont

↓
wouldnt

↓
youre

↓
well



In each sentence below, write the contracted form of the underlined words. Take care to write them correctly; make sure the position of the apostrophe is clear and that letters are formed correctly.

This button does not work.

You should not call out in class.

↓
.....

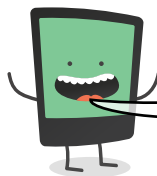
↓
.....

I shall not come to your party.

Ben will not be able to play today.

↓
.....

↓
.....



Complete the sentence below with a contraction that makes sense.

..... going to really enjoy the film.