

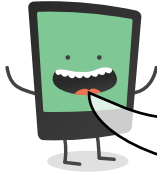


Name: _____

Date: _____

I can identify other uses for apostrophes and can avoid common errors.

LessonID: 303



It's easy to make simple mistakes when using apostrophes. Remember, they're either used to show **possession** (one thing belonging to another), or **omission/contraction** (missing letters). For each sentence below, show whether the apostrophe is showing **possession** or **contraction**.

Sentence	Apostrophe shows possession	Apostrophe shows contraction
Paul's birthday is in June.		
It is almost 4 o'clock.		
Beth loves the music of the '90s.		
The pupils' lunch boxes went missing.		
London's population is growing.		
You're going to love this song.		



The following sentences contain some errors involving apostrophes and spelling. Rewrite each sentence in the space provided, correcting each of the errors.

Who's turn is it next?

.....
.....

Your going next, are'nt you?

.....
.....

It's battery's have run out.

.....
.....

There going to a 90's disco.

.....
.....