



Name: _____

Date: _____

I can fix comma splices.

LessonID: 314



A comma splice occurs when a comma is used to link two main clauses; it's bad grammar and should be avoided. We can fix comma splices in three ways: with fullstops, with semicolons or with conjunctions. **Fix each of these comma splices** using all three methods. The first has been done for you.

Ben loves art lessons, he's really good at art.

Fullstop

Semicolon

Conjunction

.....

.....

.....

.....

.....

.....

.....

.....

.....

.....

.....

.....

Sally was elected class captain, she really hoped she'd do a good job.

Fullstop

Semicolon

Conjunction

.....

.....

.....

.....

.....

.....

.....

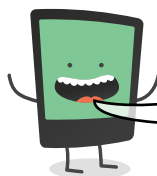
.....

.....

.....

.....

.....



Be careful not to overuse any of these methods for fixing your comma splices. Vary your sentences to make them more interesting. Here are some conjunctions you could try using.

therefore

because

eventhough

despite

yet

so