



Name: _____

Date: _____

I can identify antonyms

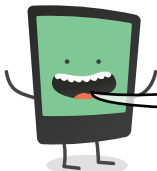
LessonID: 485



An antonym is a word that has the opposite meaning to another word. Antonyms must not be confused with synonyms, which have the same meaning. Look at the words below. Draw a line to match each word to its antonym. **Use a dictionary if necessary.**

Word	Antonym
abundant	vanish
appear	greedy
bless	scarce
generous	curse

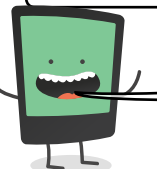
Word	Antonym
lenient	wide
confident	request
demand	shy
narrow	strict



Circle the two words that are antonyms in each of the passages below.

By using a gentle acid, such as lemon juice, a once-beautiful bathroom can have its dull taps and tiles cleaned to reveal their shiny beauty.

Ben preferred a traditional way of life, made up of simple pleasures and very little stress; this very much goes against the demands of modern life.



Write a suitable antonym for each word below.

precious

exquisite

relaxed

safe